

# Customised Hats



2.1



2.2

2.3

2.4

2.5

2.6

2.7

2.8

2.9

2.10

2.11

2.12

# Hats for Hire



3.1



3.2



3.3



3.4



3.5



3.6



3.7



3.8



3.9



3.10



3.11



3.12

# Hats for Hire



4.1



4.2



4.3



4.4

4.5

4.6

4.7

4.8

4.9

4.10

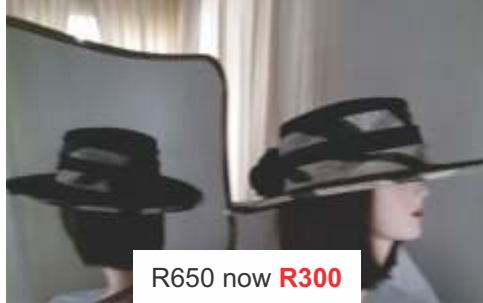
4.11

4.12

# Hats for Sale



5.1



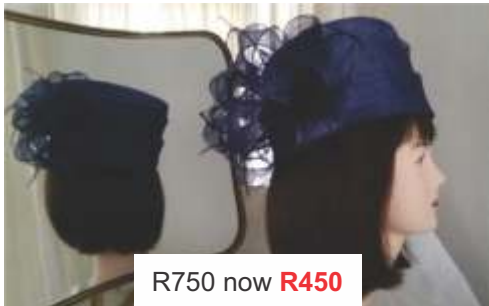
R650 now **R300**

5.2



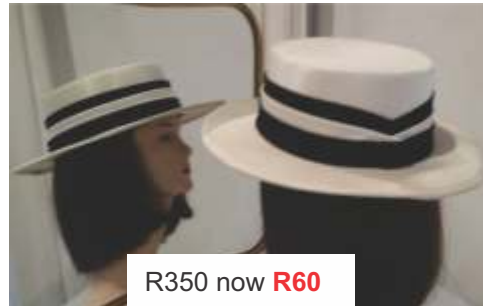
R1 200 now **R500**

5.3



R750 now **R450**

5.4



R350 now **R60**

5.5



R350 now **R190**

5.6



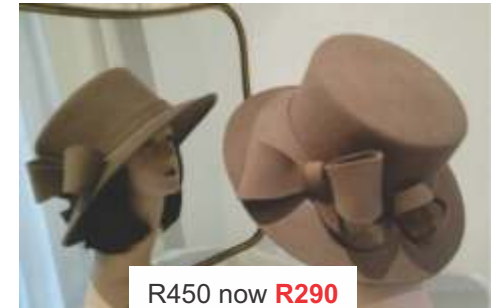
R380 now **R80**

5.7



R380 now **R40**

5.8



R450 now **R290**

5.9



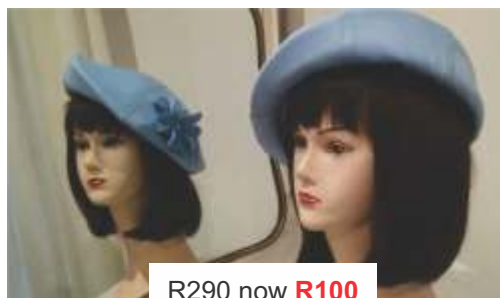
R1 000 now **R650**

5.10



R650 now **R85**

5.11



R290 now **R100**

5.12

# Hats for Sale



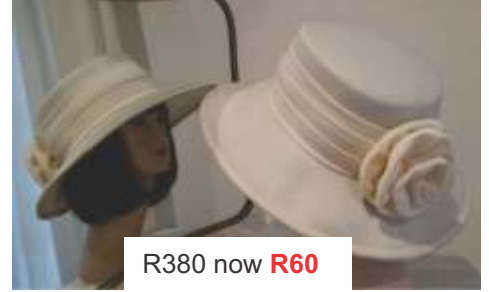
R175 now **R95**

6.1



R175 now **R95**

6.2



R380 now **R60**

6.3



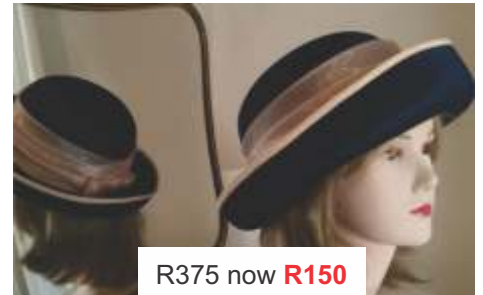
R1 200 now **R650**

6.4



R750 now **R375**

6.5



R375 now **R150**

6.6



**R400**

Grey + Brown

6.7



**R400**

Dusty Pink, Beige, Grey, Charcoal

6.8



**R400**

6.9



**R400**

Black, Brown

6.10

STRUCTURED BERET



**R400**

Burgundy, Black, Beige, Brown,  
Off-white

6.11

TOP HAT



**R400**

Royal blue, Black, Cream, Beige,  
Brown, Grey

6.12

# Hats for Sale



R400

7.1



R400

7.2



R400

7.3



R400

Dusty Pink, Grey, Navy

7.4



R400

Dusty Pink, Black & White, Off-white

7.5



R400

Brown

7.6

COCKTAIL HAT



R280

7.7



R375

7.8

COCKTAIL HAT BLACK



R400

7.9



R400

Beige, Camel

7.10

7.11

7.12