

Customised Hats



2.1



2.2

2.3

2.4

2.5

2.6

2.7

2.8

2.9

2.10

2.11

2.12

Hats for Hire



3.1



3.2



3.3



3.4



3.5



3.6



3.7



3.8



3.9



3.10



3.11



3.12

Hats for Hire



4.1



4.2



4.3



4.4

4.5

4.6

4.7

4.8

4.9

4.10

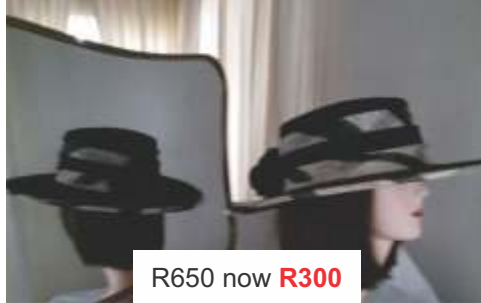
4.11

4.12

Hats for Sale



5.1



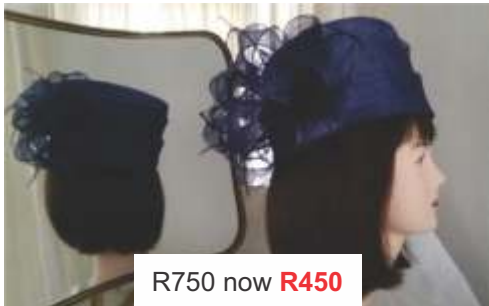
R650 now **R300**

5.2



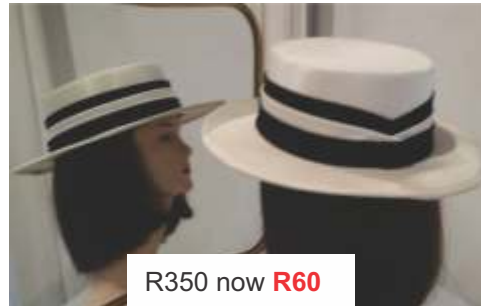
R1 200 now **R500**

5.3



R750 now **R450**

5.4



R350 now **R60**

5.5



R350 now **R190**

5.6



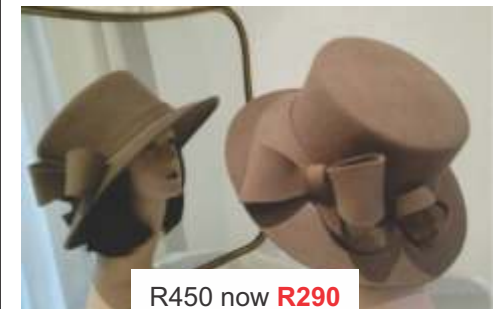
R380 now **R80**

5.7



R380 now **R40**

5.8



R450 now **R290**

5.9



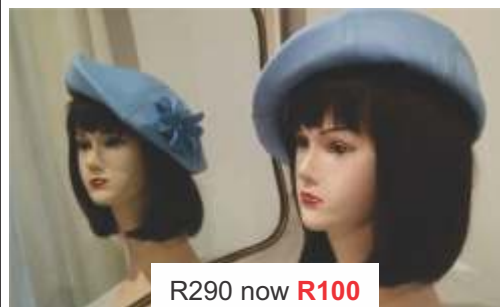
R1 000 now **R650**

5.10



R650 now **R85**

5.11



R290 now **R100**

5.12

Hats for Sale



R175 now **R95**

6.1



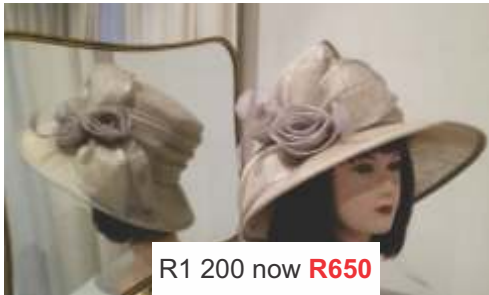
R175 now **R95**

6.2



R380 now **R60**

6.3



R1 200 now **R650**

6.4



R750 now **R375**

6.5



R375 now **R150**

6.6



R400

Grey + Brown

6.7



R400

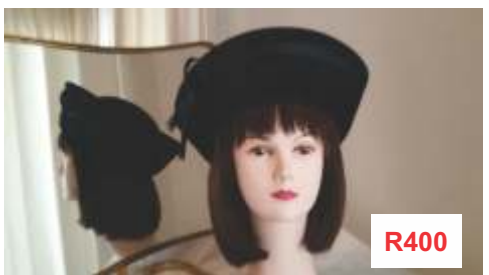
Dusty Pink, Beige, Grey, Charcoal

6.8



R400

6.9



R400

Black, Brown

6.10

STRUCTURED BERET



R400

Burgundy, Black, Beige, Brown,
Off-white

6.11

TOP HAT



R400

Royal blue, Black, Cream, Beige,
Brown, Grey

6.12

Hats for Sale



7.1



7.2



7.3



Dusty Pink, Grey, Navy

7.4



Dusty Pink, Black & White, Off-white

7.5



Brown

7.6

COCKTAIL HAT



7.7



7.8

COCKTAIL HAT BLACK



7.9



Beige, Camel

7.10

7.11

7.12